

Plate nosepieces (for riveting soft and fragile materials)

Plate nosepiece P without cut-out

Rivet Ø	Rivet material	Ø d	Designation	SN 2, HN 2, PH 1, PH 2, PH 2-KA, PH-Axial, PH 2000		TAURUS® AccuBird® PowerBird®	
				Article no. Dome head	Designation	Article no.	
3 and 3,2	Al, Cu, Steel, Stainless steel, Stinox, Al/Al, PG Al, PG steel	2.4	P 16/24	145 6649	P 17/24	145 7335	
4	Al, Cu, CAP® Al, CAP® Cu	2.4	P 16/24	145 6649	P 17/24	145 7335	
4	Steel, Al/Al, PG Al	2.7	P 16/27	145 6650	P 17/27	145 7336	
4	Stainless steel, Stinox, PG steel	3.0	P 16/29	145 6651	P 17/29	145 7337	
4.8 and 5	Al, CAP® Al, CAP® Cu, PG Al	3.0	P 16/29	145 6651	P 17/29	145 7337	
4.8 and 5	Steel, Al/Al	3.35	P 16/32	145 6657	P 17/32	145 7338	
4.8 and 5	Stainless steel, Stinox, PG steel	3.6	P 16/36	145 6656	P 17/36	145 7339	
6	Al	3.6	P 16/36	145 6656	P 17/36	145 7339	

For countersunk head blind rivets

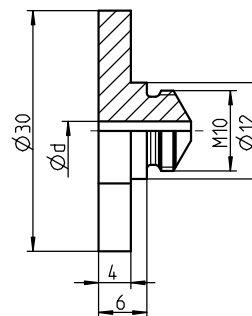
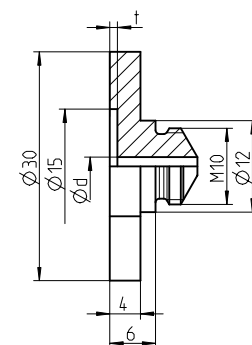


Plate nosepiece PA with cut-out

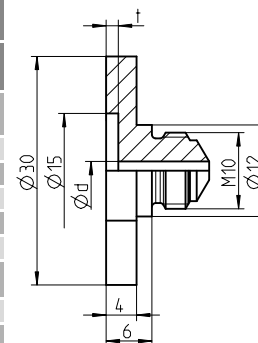
Rivet Ø	Rivet material	Ø d	Designation	Depth t	SN 2, HN 2, PH 1, PH 2, PH 2-KA, PH-Axial, PH 2000		TAURUS® AccuBird® PowerBird®	
					Article no. Dome head	Designation	Depth t	Article no.
3 and 3,2	Al, Cu, Steel, Stainless steel, Stinox, Al/Al, PG Al, PG steel	2,4	PA 16/24	1.0	145 6659	PA 17/24	1.0	145 7330
4	Al, Cu, CAP® Al, CAP® Cu	2.4	PA 16/24	1.0	145 6659	PA 17/24	1.0	145 7330
4	Steel, Al/Al, PG Al	2.7	PA 16/27	1.0	145 6660	PA 17/27	1.0	145 7331
4	Stainless steel, Stinox, PG steel	3.0	PA 16/29	1.1	145 6661	PA 17/29	1.1	145 7341
4.8 and 5	Al, CAP® Al, CAP® Cu, PG Al	3.0	PA 16/29	1.1	145 6661	PA 17/29	1.1	145 7341
5	AHarge flange K 11 and K 14	3.0	PA 16/29 K	1.5	145 6652	PA 17/29 K	1.5	145 7332
4.8 and 5	Steel, Al/Al	3.35	PA 16/32	1.1	145 6653	PA 17/32	1.1	145 7333
4.8 and 5	Stainless steel, Stinox, PG steel	3.6	PA 16/36	1.1	145 6662	PA 17/36	1.1	145 7342
6	Al	3.6	PA 16/36	1.3	145 6666	PA 17/36	1.3	145 7334

For standard blind rivets (dome head)

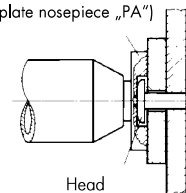


Pivot nosepieces PG for the production of articular rivet connections

Rivet Ø	Rivet material	Ø d	Designation	Depth t	SN 2, HN 2, PH 1, PH 2, PH 2-KA, PH-Axial, PH 2000		TAURUS® AccuBird® PowerBird®	
					Article no. Dome head	Designation	Depth t	Article no.
3 and 3,2	Al, Cu, Steel, Stainless steel, Stinox, Al/Al, PG Al, PG steel	2.4	PG 16/24	1.6	145 6663	PG 17/24	1.6	143 5002
4	Al, Cu, CAP® Al, CAP® Cu	2.4	PG 16/24	1.6	145 6663	PG 17/24	1.6	143 5002
4	Steel, Al/Al, PG Al	2.7	PG 16/27	1.6	145 6664	PG 17/27	1.6	143 5003
4	Stainless steel, Stinox, PG steel	3.0	PG 16/29	1.6	145 6655	PG 17/29	1.6	143 5007
4.8 and 5	Al, CAP® Al, CAP® Cu, PG Al	3.0	PG 16/29	1.6	145 6655	PG 17/29	1.6	143 5007
5	AHarge flange K 11 and K 14	3.0	PG 16/29 K	2.0	145 6658	PG 17/29 K	2.0	143 5004
5	AHarge flange K 16	3.0	-	-	-	PG 17/29 K16	2.0	143 5009
4.8 and 5	Steel, Al/Al	3.35	PG 16/32	1.6	145 6654	PG 17/32	1.6	143 5005
4.8 and 5	Stainless steel, Stinox, PG steel	3.6	PG 16/36	1.6	145 6665	PG 17/36	1.6	143 5006
6	Al	3.6	PG 16/36	2.0	146 4002	PG 17/36	2.0	145 7340



Pivot nosepiece PG (dimensions compare plate nosepiece „PA“)



DELIVERY TIMES ON REQUEST!